

# AVERAGE WEEKLY EARNINGS

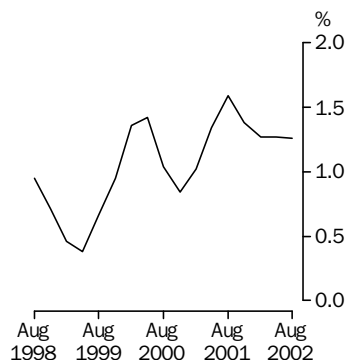
AUSTRALIA

EMBARGO: 11:30AM (CANBERRA TIME) THURS 14 NOV 2002

## AUGUST 2002 KEY FIGURES

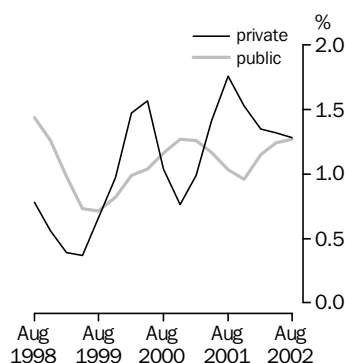
### Full-time adult total earnings

Quarterly % change in trend estimates  
All Sectors



### Full-time adult total earnings

Quarterly % change in trend estimates  
Private and Public



### TREND ESTIMATES

	Aug 2002 \$	May 2002 to Aug 2002 % change	Aug 2001 to Aug 2002 % change
<b>Australia</b>			
Full-time adult ordinary time earnings	878.80	1.1	5.0
Full-time adult total earnings	919.00	1.3	5.3
All employees total earnings	696.40	0.9	3.6
<b>Private sector</b>			
Full-time adult ordinary time earnings	850.90	1.1	5.2
Full-time adult total earnings	894.00	1.3	5.6
<b>Public sector</b>			
Full-time adult ordinary time earnings	976.50	1.3	4.7
Full-time adult total earnings	1 006.70	1.3	4.7

### SEASONALLY ADJUSTED ESTIMATES

<b>Australia</b>			
Full-time adult ordinary time earnings	879.40	1.4	4.9
Full-time adult total earnings	919.90	1.6	5.2
All employees total earnings	697.40	1.3	3.6
<b>Private sector</b>			
Full-time adult ordinary time earnings	851.40	1.4	5.1
Full-time adult total earnings	894.60	1.7	5.5
<b>Public sector</b>			
Full-time adult ordinary time earnings	977.90	1.4	4.9
Full-time adult total earnings	1 008.20	1.5	4.9

## AUGUST 2002 KEY POINTS

### TREND ESTIMATES

- Full-time adult ordinary time earnings rose by 4.7% for males and 5.2% for females in the twelve months to August 2002.
- In the twelve months to August 2002, full-time adult total earnings rose by 5.3% for males and by 5.1% for females.
- Full-time adult ordinary time earnings for the private and public sectors rose by 5.2% and 4.7% respectively in the twelve months to August 2002.

**NOTE!**  
Please refer to  
Changes in this  
Issue on page 2.

- For further information about these and related statistics, contact Colin Fallows on Perth 08 9360 5304 or the National Information and Referral Service on 1300 135 070.

# NOTES

## FORTHCOMING ISSUES

### REFERENCE PERIOD

### EXPECTED RELEASE DATE

November 2002

20 February 2003

February 2003

22 May 2003

## CHANGES IN THIS ISSUE

As advised in the previous issue, this publication presents the first release of estimates from the Average Weekly Earnings Survey compiled using new statistical infrastructure. Estimates for August 2002 have been compiled on the new basis.

Estimates of the impact of the infrastructure changes were compiled by combining survey data collected on the old basis in respect of May 2002 with information about the changes. The impacts of the changes on the numerator and denominator series used to calculate the average weekly earnings series were very similar and have not affected the continuity of the key statistical series from this survey. For example, the estimated impact on the level of average weekly ordinary time earnings for full-time adults (AWOTE) at the Australia level is -0.05% (-\$0.46).

## SAMPLING ERRORS

In order to spread reporting load, some sampled businesses are removed from the sample each quarter and replaced with similar businesses. This rotation process usually involves about 7% of the units in the survey sample. However, due to the changes described above, the rotation rate for the August 2002 survey was approximately 35%. Businesses added to the sample can report differently from those which they replace or are already in the sample. The potential impact of this increased rotation is reflected in the standard errors of movement which are higher than normal this quarter.

For more information on sampling errors refer to Technical Notes.

## NOTES ON ESTIMATES

### COMPOSITIONAL EFFECTS

Movements in average weekly earnings can be affected by both changes in the level of earnings per employee and changes in the composition of the labour force. For example, changes in the proportions of full-time, part-time, casual and junior employees and variations in the distribution of occupations can affect movements in earnings series. Refer to paragraphs 17 and 18 of the Explanatory Notes.

Dennis Trewin  
Australian Statistician

# C O N T E N T S

	page
<b>EDITORIAL</b>	
Notes .....	2
<b>TABLES</b>	
Average Weekly Earnings	
1 Australia: Trend .....	4
2 Australia: Seasonally adjusted .....	5
3 Australia: Original .....	6
4 Private sector, Australia: Trend .....	7
5 Private sector, Australia: Seasonally adjusted .....	8
6 Private sector, Australia: Original .....	9
7 Public sector, Australia: Trend .....	10
8 Public sector, Australia: Seasonally adjusted .....	11
9 Public sector, Australia: Original .....	12
10 Industry, Australia: Original .....	13
11 States & territories: Trend .....	14
12 States & territories: Seasonally adjusted .....	16
13 States & territories: Original .....	18
14 Quarterly percentage change, States & territories: Trend .....	20
15 Quarterly percentage change, States & territories: Seasonally adjusted .	21
16 Quarterly percentage change, States & territories: Original .....	22
17 Annual percentage change, States & territories: Trend .....	23
<b>ADDITIONAL INFORMATION</b>	
Explanatory notes .....	24
Technical notes .....	29
Special data service .....	33
Glossary .....	34



**AVERAGE WEEKLY EARNINGS, Australia: Trend**

Reference period	MALES.....			FEMALES.....			PERSONS.....		
	Full-time adult ordinary time earnings	Full-time adult total earnings	All males total earnings	Full-time adult ordinary time earnings	Full-time adult total earnings	All females total earnings	Full-time adult ordinary time earnings	Full-time adult total earnings	All employees total earnings
DOLLARS									
<b>2001</b>									
May	873.00	920.70	789.90	738.80	752.00	528.10	824.10	859.30	664.20
August	886.50	934.70	801.50	750.00	762.80	532.40	837.30	872.90	672.10
November	898.80	948.00	811.80	760.20	772.50	535.60	849.00	885.00	678.10
<b>2002</b>									
February	909.50	960.80	820.50	769.60	781.80	539.20	859.00	896.20	683.90
May	919.40	972.90	828.10	779.10	791.40	542.70	868.90	907.60	689.90
August	928.50	983.90	834.90	788.90	801.40	547.20	878.80	919.00	696.40
PERCENTAGE CHANGE (from previous quarter)									
<b>2001</b>									
May	1.4	1.3	1.3	1.4	1.3	0.8	1.4	1.3	1.2
August	1.5	1.5	1.5	1.5	1.4	0.8	1.6	1.6	1.2
November	1.4	1.4	1.3	1.4	1.3	0.6	1.4	1.4	0.9
<b>2002</b>									
February	1.2	1.3	1.1	1.2	1.2	0.7	1.2	1.3	0.9
May	1.1	1.3	0.9	1.2	1.2	0.6	1.2	1.3	0.9
August	1.0	1.1	0.8	1.3	1.3	0.8	1.1	1.3	0.9
PERCENTAGE CHANGE (from corresponding quarter of previous year)									
<b>2000</b>									
August	5.4	4.7	4.5	4.9	5.1	6.4	5.3	4.9	5.6
<b>2001</b>									
August	5.0	4.6	4.6	5.7	5.1	4.0	5.4	4.9	4.4
<b>2002</b>									
August	4.7	5.3	4.2	5.2	5.1	2.8	5.0	5.3	3.6

AVERAGE WEEKLY EARNINGS, Australia: **Seasonally adjusted**

Reference period	MALES.....			FEMALES.....			PERSONS.....		
	Full-time adult ordinary time earnings	Full-time adult total earnings	All males total earnings	Full-time adult ordinary time earnings	Full-time adult total earnings	All females total earnings	Full-time adult ordinary time earnings	Full-time adult total earnings	All employees total earnings
DOLLARS									
<b>2001</b>									
May	874.90	924.00	791.20	738.70	752.10	524.00	825.00	860.70	664.00
August	886.80	935.10	801.40	751.40	764.10	534.60	838.40	874.30	672.90
November	897.50	944.40	811.30	759.00	770.80	534.30	848.00	882.40	677.40
<b>2002</b>									
February	910.90	964.50	821.80	770.80	783.70	541.70	860.40	899.20	685.00
May	919.50	972.50	828.00	777.80	789.50	539.20	867.60	905.30	688.40
August	927.60	982.50	834.30	789.70	802.40	549.40	879.40	919.90	697.40
PERCENTAGE CHANGE (from previous quarter)									
<b>2001</b>									
May	1.9	1.9	1.6	1.6	1.4	-0.9	1.8	1.7	1.0
August	1.4	1.2	1.3	1.7	1.6	2.0	1.6	1.6	1.3
November	1.2	1.0	1.2	1.0	0.9	-0.1	1.1	0.9	0.7
<b>2002</b>									
February	1.5	2.1	1.3	1.6	1.7	1.4	1.5	1.9	1.1
May	1.0	0.8	0.8	0.9	0.7	-0.5	0.8	0.7	0.5
August	0.9	1.0	0.8	1.5	1.6	1.9	1.4	1.6	1.3
PERCENTAGE CHANGE (from corresponding quarter of previous year)									
<b>2000</b>									
August	6.6	6.1	5.8	5.2	5.5	7.2	6.2	6.0	6.8
<b>2001</b>									
August	4.7	4.0	4.1	5.6	4.8	4.0	5.1	4.3	4.0
<b>2002</b>									
August	4.6	5.1	4.1	5.1	5.0	2.8	4.9	5.2	3.6

AVERAGE WEEKLY EARNINGS, Australia: **Original**

Reference period	MALES.....			FEMALES.....			PERSONS.....		
	Full-time adult ordinary time earnings	Full-time adult total earnings	All males total earnings	Full-time adult ordinary time earnings	Full-time adult total earnings	All females total earnings	Full-time adult ordinary time earnings	Full-time adult total earnings	All employees total earnings
DOLLARS									
<b>2001</b>									
May	873.30	923.40	789.40	737.10	750.60	524.70	824.10	861.00	662.60
August	888.30	934.90	801.40	751.10	763.70	534.70	838.50	872.70	672.60
November	898.00	947.70	811.50	759.70	772.80	531.70	848.70	885.40	676.40
<b>2002</b>									
February	910.50	961.80	823.30	772.10	783.80	543.10	860.50	897.50	687.60
May	918.00	972.10	826.10	775.90	787.80	540.10	866.80	905.70	686.90
August	929.10	982.20	834.40	789.40	802.00	549.50	879.40	918.10	697.10
PERCENTAGE CHANGE (from previous quarter)									
<b>2001</b>									
May	1.7	2.1	1.1	1.2	1.2	-1.1	1.7	2.0	0.3
August	1.7	1.2	1.5	1.9	1.7	1.9	1.7	1.4	1.5
November	1.1	1.4	1.3	1.1	1.2	-0.5	1.2	1.5	0.6
<b>2002</b>									
February	1.4	1.5	1.5	1.6	1.4	2.1	1.4	1.4	1.7
May	0.8	1.1	0.3	0.5	0.5	-0.6	0.7	0.9	-0.1
August	1.2	1.0	1.0	1.7	1.8	1.8	1.5	1.4	1.5
PERCENTAGE CHANGE (from corresponding quarter of previous year)									
<b>2000</b>									
August	6.6	6.1	5.8	5.2	5.5	7.3	6.2	6.0	6.8
<b>2001</b>									
August	4.7	4.0	4.1	5.7	4.8	4.0	5.1	4.3	4.0
<b>2002</b>									
August	4.6	5.1	4.1	5.1	5.0	2.8	4.9	5.2	3.7

# 4

## AVERAGE WEEKLY EARNINGS, Private sector, Australia: **Trend**

Reference period	MALES.....			FEMALES.....			PERSONS.....		
	Full-time adult ordinary time earnings	Full-time adult total earnings	All males total earnings	Full-time adult ordinary time earnings	Full-time adult total earnings	All females total earnings	Full-time adult ordinary time earnings	Full-time adult total earnings	All employees total earnings
DOLLARS									
<b>2001</b>									
May	846.80	895.80	756.80	692.60	705.90	477.60	795.00	831.90	627.50
August	861.10	910.60	769.50	704.00	716.80	480.50	809.10	846.60	635.80
November	874.10	924.70	780.30	714.70	726.80	483.00	821.60	859.60	642.00
<b>2002</b>									
February	884.80	937.90	788.90	724.10	736.10	486.50	831.80	871.20	647.60
May	894.50	950.20	796.50	733.40	745.60	490.00	841.50	882.70	653.30
August	903.20	960.90	803.20	742.90	755.40	494.50	850.90	894.00	659.40
PERCENTAGE CHANGE (from previous quarter)									
<b>2001</b>									
May	1.5	1.4	1.5	1.5	1.3	0.6	1.5	1.4	1.2
August	1.7	1.7	1.7	1.7	1.5	0.6	1.8	1.8	1.3
November	1.5	1.5	1.4	1.5	1.4	0.5	1.5	1.5	1.0
<b>2002</b>									
February	1.2	1.4	1.1	1.3	1.3	0.7	1.2	1.4	0.9
May	1.1	1.3	1.0	1.3	1.3	0.7	1.2	1.3	0.9
August	1.0	1.1	0.8	1.3	1.3	0.9	1.1	1.3	0.9
PERCENTAGE CHANGE (from corresponding quarter of previous year)									
<b>2000</b>									
August	5.5	4.7	4.7	5.4	5.7	7.2	5.5	5.2	6.2
<b>2001</b>									
August	5.3	4.7	5.0	5.8	4.9	3.4	5.6	5.0	4.6
<b>2002</b>									
August	4.9	5.5	4.4	5.5	5.4	2.9	5.2	5.6	3.7

AVERAGE WEEKLY EARNINGS, Private sector, Australia: **Seasonally adjusted**

Reference period	MALES.....			FEMALES.....			PERSONS.....		
	Full-time adult ordinary time earnings	Full-time adult total earnings	All males total earnings	Full-time adult ordinary time earnings	Full-time adult total earnings	All females total earnings	Full-time adult ordinary time earnings	Full-time adult total earnings	All employees total earnings
DOLLARS									
<b>2001</b>									
May	849.30	900.40	759.00	692.10	705.60	473.20	796.40	834.20	627.60
August	861.30	910.50	769.10	705.60	718.60	482.20	809.90	847.80	635.80
November	872.50	920.40	779.80	713.40	724.70	482.20	820.60	856.70	642.30
<b>2002</b>									
February	887.20	942.50	790.70	725.80	738.70	488.50	833.80	875.00	648.40
May	894.00	949.70	795.50	731.40	743.00	486.70	839.80	880.10	651.00
August	902.30	958.90	803.10	743.90	756.60	496.80	851.40	894.60	661.30
PERCENTAGE CHANGE (from previous quarter)									
<b>2001</b>									
May	2.2	2.3	2.0	1.6	1.3	-1.5	2.1	2.1	1.1
August	1.4	1.1	1.3	1.9	1.8	1.9	1.7	1.6	1.3
November	1.3	1.1	1.4	1.1	0.9	0.0	1.3	1.0	1.0
<b>2002</b>									
February	1.7	2.4	1.4	1.7	1.9	1.3	1.6	2.1	0.9
May	0.8	0.8	0.6	0.8	0.6	-0.4	0.7	0.6	0.4
August	0.9	1.0	0.9	1.7	1.8	2.1	1.4	1.7	1.6
PERCENTAGE CHANGE (from corresponding quarter of previous year)									
<b>2000</b>									
August	6.8	6.5	6.2	5.7	6.3	8.2	6.6	6.6	7.7
<b>2001</b>									
August	4.9	4.0	4.3	5.8	4.6	3.4	5.3	4.3	4.0
<b>2002</b>									
August	4.8	5.3	4.4	5.4	5.3	3.0	5.1	5.5	4.0



AVERAGE WEEKLY EARNINGS, Private sector, Australia: **Original**

Reference period	MALES.....			FEMALES.....			PERSONS.....		
	Full-time adult ordinary time earnings	Full-time adult total earnings	All males total earnings	Full-time adult ordinary time earnings	Full-time adult total earnings	All females total earnings	Full-time adult ordinary time earnings	Full-time adult total earnings	All employees total earnings
DOLLARS									
<b>2001</b>									
May	847.90	899.30	757.90	690.00	703.30	473.50	795.30	834.00	626.60
August	864.00	912.00	769.60	705.90	718.60	483.60	811.30	847.60	637.00
November	872.50	923.90	780.70	714.50	727.90	479.90	821.10	860.10	641.00
<b>2002</b>									
February	885.50	938.40	790.10	726.60	737.80	489.00	832.80	871.90	649.20
May	892.70	948.80	794.50	729.10	740.50	487.00	838.70	880.00	650.20
August	905.20	960.40	803.70	744.40	756.70	498.30	852.90	894.20	662.60
PERCENTAGE CHANGE (from previous quarter)									
<b>2001</b>									
May	2.2	2.6	1.9	1.2	1.1	-1.6	2.1	2.4	0.8
August	1.9	1.4	1.6	2.3	2.2	2.1	2.0	1.6	1.6
November	1.0	1.3	1.4	1.2	1.3	-0.8	1.2	1.5	0.6
<b>2002</b>									
February	1.5	1.6	1.2	1.7	1.4	1.9	1.4	1.4	1.3
May	0.8	1.1	0.6	0.3	0.4	-0.4	0.7	0.9	0.2
August	1.4	1.2	1.2	2.1	2.2	2.3	1.7	1.6	1.9
PERCENTAGE CHANGE (from corresponding quarter of previous year)									
<b>2000</b>									
August	6.8	6.5	6.2	5.8	6.3	8.2	6.6	6.6	7.7
<b>2001</b>									
August	4.9	4.0	4.3	5.8	4.6	3.5	5.3	4.3	4.0
<b>2002</b>									
August	4.8	5.3	4.4	5.4	5.3	3.0	5.1	5.5	4.0



AVERAGE WEEKLY EARNINGS, Public sector, Australia: **Trend**

Reference period	MALES.....			FEMALES.....			PERSONS.....		
	Full-time adult ordinary time earnings	Full-time adult total earnings	All males total earnings	Full-time adult ordinary time earnings	Full-time adult total earnings	All females total earnings	Full-time adult ordinary time earnings	Full-time adult total earnings	All employees total earnings
DOLLARS									
<b>2001</b>									
May	980.80	1 023.60	943.40	853.20	866.30	695.30	922.50	951.80	807.20
August	992.80	1 035.40	952.60	862.30	875.00	703.00	932.70	961.60	814.60
November	1 003.70	1 046.70	962.10	870.00	882.70	709.80	941.80	970.80	822.10
<b>2002</b>									
February	1 015.00	1 059.10	972.50	879.80	892.50	716.80	952.30	981.90	830.40
May	1 027.10	1 071.80	982.90	891.30	904.10	723.40	964.10	994.10	838.40
August	1 039.50	1 084.70	994.90	903.60	916.40	730.00	976.50	1 006.70	846.80
PERCENTAGE CHANGE (from previous quarter)									
<b>2001</b>									
May	1.3	1.2	0.8	1.4	1.3	1.3	1.3	1.2	1.0
August	1.2	1.1	1.0	1.1	1.0	1.1	1.1	1.0	0.9
November	1.1	1.1	1.0	0.9	0.9	1.0	1.0	1.0	0.9
<b>2002</b>									
February	1.1	1.2	1.1	1.1	1.1	1.0	1.1	1.1	1.0
May	1.2	1.2	1.1	1.3	1.3	0.9	1.2	1.2	1.0
August	1.2	1.2	1.2	1.4	1.4	0.9	1.3	1.3	1.0
PERCENTAGE CHANGE (from corresponding quarter of previous year)									
<b>2000</b>									
August	5.7	4.8	4.6	3.5	3.5	3.1	4.7	4.1	3.5
<b>2001</b>									
August	5.0	4.8	3.9	5.4	5.3	5.3	5.0	4.8	4.3
<b>2002</b>									
August	4.7	4.8	4.4	4.8	4.7	3.8	4.7	4.7	3.9

AVERAGE WEEKLY EARNINGS, Public sector, Australia: **Seasonally adjusted**

Reference period	MALES.....			FEMALES.....			PERSONS.....		
	<i>Full-time adult ordinary time earnings</i>	<i>Full-time adult total earnings</i>	<i>All males total earnings</i>	<i>Full-time adult ordinary time earnings</i>	<i>Full-time adult total earnings</i>	<i>All females total earnings</i>	<i>Full-time adult ordinary time earnings</i>	<i>Full-time adult total earnings</i>	<i>All employees total earnings</i>
DOLLARS									
<b>2001</b>									
May	980.70	1 022.80	936.60	854.20	867.70	694.90	923.10	952.10	804.30
August	991.70	1 034.40	955.40	862.30	874.60	704.00	932.10	960.80	816.10
November	1 006.70	1 048.10	962.10	869.20	881.90	706.90	943.00	971.00	820.10
<b>2002</b>									
February	1 012.00	1 058.70	973.90	879.40	892.60	720.40	950.50	981.70	833.30
May	1 027.30	1 070.70	978.80	890.50	903.00	721.30	964.10	993.10	835.70
August	1 041.10	1 086.30	998.40	905.10	917.90	730.20	977.90	1 008.20	847.90
PERCENTAGE CHANGE (from previous quarter)									
<b>2001</b>									
May	1.2	0.8	-0.5	1.3	1.3	0.9	1.2	1.0	0.1
August	1.1	1.1	2.0	1.0	0.8	1.3	1.0	0.9	1.5
November	1.5	1.3	0.7	0.8	0.8	0.4	1.2	1.1	0.5
<b>2002</b>									
February	0.5	1.0	1.2	1.2	1.2	1.9	0.8	1.1	1.6
May	1.5	1.1	0.5	1.3	1.2	0.1	1.4	1.2	0.3
August	1.3	1.5	2.0	1.6	1.7	1.2	1.4	1.5	1.5
PERCENTAGE CHANGE (from corresponding quarter of previous year)									
<b>2000</b>									
August	5.9	5.1	4.8	3.5	3.4	2.9	4.8	4.3	3.7
<b>2001</b>									
August	4.7	4.4	4.2	5.3	5.2	5.5	4.8	4.6	4.5
<b>2002</b>									
August	5.0	5.0	4.5	5.0	5.0	3.7	4.9	4.9	3.9



AVERAGE WEEKLY EARNINGS, Public sector, Australia: **Original**

Reference period	MALES.....			FEMALES.....			PERSONS.....		
	Full-time adult ordinary time earnings	Full-time adult total earnings	All males total earnings	Full-time adult ordinary time earnings	Full-time adult total earnings	All females total earnings	Full-time adult ordinary time earnings	Full-time adult total earnings	All employees total earnings
DOLLARS									
<b>2001</b>									
May	978.90	1 023.30	935.30	853.80	868.00	693.30	921.90	952.50	802.80
August	988.80	1 029.80	949.90	859.60	872.00	698.60	929.00	956.70	809.90
November	1 007.60	1 050.20	958.80	868.70	881.10	703.30	943.40	972.00	816.60
<b>2002</b>									
February	1 016.10	1 060.90	984.40	883.20	895.90	731.20	954.60	984.60	844.80
May	1 025.40	1 071.00	977.30	890.10	903.20	719.60	962.80	993.40	834.20
August	1 038.00	1 081.50	992.50	902.20	915.20	724.80	974.70	1 003.90	841.50
PERCENTAGE CHANGE (from previous quarter)									
<b>2001</b>									
May	0.6	0.6	-1.7	0.8	1.0	-0.8	0.6	0.7	-1.5
August	1.0	0.6	1.6	0.7	0.5	0.8	0.8	0.4	0.9
November	1.9	2.0	0.9	1.1	1.0	0.7	1.5	1.6	0.8
<b>2002</b>									
February	0.8	1.0	2.7	1.7	1.7	4.0	1.2	1.3	3.4
May	0.9	0.9	-0.7	0.8	0.8	-1.6	0.9	0.9	-1.3
August	1.2	1.0	1.6	1.4	1.3	0.7	1.2	1.1	0.9
PERCENTAGE CHANGE (from corresponding quarter of previous year)									
<b>2000</b>									
August	5.9	5.1	4.8	3.5	3.4	2.9	4.8	4.2	3.7
<b>2001</b>									
August	4.7	4.4	4.2	5.3	5.2	5.5	4.8	4.5	4.5
<b>2002</b>									
August	5.0	5.0	4.5	5.0	5.0	3.7	4.9	4.9	3.9

AVERAGE WEEKLY EARNINGS, Industry, Australia: **Original**

Industry	MALES.....			FEMALES.....			PERSONS.....		
	<i>Full-time adult ordinary time earnings</i>	<i>Full-time adult total earnings</i>	<i>All males total earnings</i>	<i>Full-time adult ordinary time earnings</i>	<i>Full-time adult total earnings</i>	<i>All females total earnings</i>	<i>Full-time adult ordinary time earnings</i>	<i>Full-time adult total earnings</i>	<i>All employees total earnings</i>
DOLLARS									
Mining	1 421.70	1 552.60	1 526.40	1 020.60	1 047.30	994.00	1 381.20	1 501.60	1 468.80
Manufacturing	871.10	948.40	893.70	712.80	747.20	612.30	837.50	905.60	819.20
Electricity, gas and water supply	1 129.40	1 228.50	1 202.40	933.50	951.20	849.80	1 097.80	1 183.70	1 133.60
Construction	821.70	918.10	847.60	666.60	675.00	523.80	803.30	889.30	795.00
Wholesale trade	855.20	892.30	843.80	710.70	718.80	592.30	819.10	848.90	766.80
Retail trade	688.70	721.80	518.40	617.70	625.90	346.60	663.50	687.80	426.50
Accommodation, cafes and restaurants	710.90	725.80	451.40	610.70	621.80	337.20	672.30	685.70	388.40
Transport and storage	856.90	955.80	895.40	740.20	762.30	648.10	827.80	907.50	824.00
Communication services	1 030.30	1 068.20	969.30	910.90	924.00	734.50	996.20	1 027.10	888.70
Finance and insurance	1 275.80	1 284.50	1 205.40	842.00	854.60	683.20	1 054.30	1 065.00	890.50
Property and business services	1 105.40	1 130.50	908.70	814.70	819.10	618.50	989.40	1 006.30	777.90
Government administration and defence	977.60	1 003.30	937.60	866.10	876.00	718.50	930.90	950.00	829.50
Education	1 069.30	1 075.80	877.80	942.90	944.80	665.70	991.90	995.60	731.10
Health and community services	1 022.50	1 071.40	865.10	801.80	821.30	574.40	871.60	900.40	634.00
Cultural and recreational services	936.30	954.20	625.00	806.00	815.00	378.40	884.10	898.50	486.10
Personal and other services	894.00	934.60	800.50	749.70	765.70	478.90	845.20	877.50	642.50
<b>All industries</b>	<b>929.10</b>	<b>982.20</b>	<b>834.40</b>	<b>789.40</b>	<b>802.00</b>	<b>549.50</b>	<b>879.40</b>	<b>918.10</b>	<b>697.10</b>

## PERCENTAGE CHANGE (from corresponding quarter of previous year)

Mining	5.2	5.5	5.5	3.7	3.7	5.4	5.1	5.4	5.6
Manufacturing	9.0	9.3	8.1	11.8	11.7	4.9	9.8	10.0	7.4
Electricity, gas and water supply	4.0	3.5	3.3	3.7	2.8	2.4	3.7	3.0	2.5
Construction	4.2	7.5	7.7	4.5	4.1	15.6	3.9	6.8	9.2
Wholesale trade	2.0	3.1	4.5	-3.2	-3.1	-3.9	1.4	2.4	3.5
Retail trade	7.2	4.9	4.3	8.1	7.2	9.9	7.2	5.3	6.3
Accommodation, cafes and restaurants	5.3	5.3	1.3	1.2	1.7	-1.5	3.6	3.7	-1.3
Transport and storage	-3.0	-2.4	-0.9	5.8	5.4	7.4	-1.6	-1.4	0.3
Communication services	3.2	3.4	-1.9	3.3	3.4	-1.0	3.2	3.4	-1.6
Finance and insurance	1.7	1.1	0.5	3.3	2.9	-3.7	2.5	2.0	-2.7
Property and business services	6.6	6.8	-0.5	7.6	7.3	3.9	7.6	7.8	2.9
Government administration and defence	3.3	3.3	1.9	4.3	4.3	3.1	3.7	3.7	2.4
Education	3.2	3.2	3.3	5.3	5.2	4.0	4.3	4.2	3.5
Health and community services	5.7	6.1	1.0	3.5	3.8	2.3	3.9	4.2	1.5
Cultural and recreational services	5.9	6.4	5.7	5.2	5.4	-7.2	5.3	5.7	-3.0
Personal and other services	2.4	2.1	2.5	6.3	6.1	4.4	3.8	3.6	4.5
<b>All industries</b>	<b>4.6</b>	<b>5.1</b>	<b>4.1</b>	<b>5.1</b>	<b>5.0</b>	<b>2.8</b>	<b>4.9</b>	<b>5.2</b>	<b>3.7</b>

AVERAGE WEEKLY EARNINGS, States & territories: **Trend**

Reference period	MALES.....			FEMALES.....			PERSONS.....		
	Full-time adult ordinary time earnings	Full-time adult total earnings	All males total earnings	Full-time adult ordinary time earnings	Full-time adult total earnings	All females total earnings	Full-time adult ordinary time earnings	Full-time adult total earnings	All employees total earnings
NEW SOUTH WALES									
<b>2001</b>									
May	931.50	982.90	840.90	765.10	778.80	558.60	869.90	907.40	706.50
August	951.00	1 001.30	856.20	780.40	793.20	564.60	888.10	924.60	717.40
November	962.70	1 012.10	864.60	792.00	804.40	569.60	899.60	935.30	723.70
<b>2002</b>									
February	966.70	1 017.90	866.30	798.70	811.70	571.10	904.40	941.40	724.30
May	970.90	1 025.30	867.60	805.70	819.10	570.30	909.80	948.90	723.20
August	975.60	1 033.30	870.10	813.20	826.50	568.80	915.40	956.60	722.40
VICTORIA									
<b>2001</b>									
May	836.10	880.30	758.30	738.20	752.50	524.80	801.00	834.80	645.90
August	852.70	898.40	773.50	748.20	762.50	525.70	815.60	850.50	654.80
November	871.80	921.20	791.60	761.70	775.50	527.10	834.00	871.00	665.00
<b>2002</b>									
February	894.20	946.70	814.20	778.20	791.40	533.70	855.10	893.80	679.50
May	917.50	970.20	837.60	792.00	804.60	543.20	874.40	913.60	695.90
August	940.50	991.60	860.10	803.90	816.00	554.90	892.10	930.70	712.60
QUEENSLAND									
<b>2001</b>									
May	809.00	858.20	741.90	699.00	711.10	509.30	769.60	806.10	632.90
August	821.30	871.80	753.70	709.20	720.70	515.00	781.10	817.70	639.80
November	832.70	881.80	764.40	715.20	726.40	520.00	790.50	825.30	646.10
<b>2002</b>									
February	842.40	892.00	769.10	721.70	732.70	521.50	798.30	833.50	648.60
May	849.80	901.60	768.10	731.40	742.30	518.50	805.90	843.30	646.10
August	856.30	912.00	765.20	742.10	753.00	512.40	813.80	854.60	640.70
SOUTH AUSTRALIA									
<b>2001</b>									
May	825.60	875.30	763.70	702.90	717.70	502.10	782.40	819.70	634.70
August	828.70	879.10	768.40	716.90	730.30	505.50	790.10	827.80	639.50
November	830.30	887.10	772.30	728.00	740.90	502.60	796.10	838.30	640.50
<b>2002</b>									
February	830.00	893.90	774.60	736.60	750.10	503.70	799.50	846.80	643.00
May	830.40	895.10	776.30	745.20	758.90	513.40	802.60	850.50	650.30
August	830.70	891.20	776.70	754.70	768.20	530.00	805.50	850.50	660.90

Reference period	MALES.....			FEMALES.....			PERSONS.....		
	Full-time adult ordinary time earnings	Full-time adult total earnings	All males total earnings	Full-time adult ordinary time earnings	Full-time adult total earnings	All females total earnings	Full-time adult ordinary time earnings	Full-time adult total earnings	All employees total earnings
WESTERN AUSTRALIA									
<b>2001</b>									
May	902.20	951.40	799.50	712.80	725.50	465.60	834.70	870.70	635.10
August	910.90	958.00	806.30	722.50	734.70	477.00	843.40	878.20	644.70
November	919.60	968.70	817.80	729.90	740.50	489.40	851.60	887.10	655.80
<b>2002</b>									
February	928.30	981.50	827.80	734.80	744.50	497.90	859.80	897.40	666.40
May	937.00	993.20	832.70	740.10	749.90	502.20	869.00	908.90	675.10
August	945.90	1 003.80	832.80	746.60	757.10	504.00	879.80	921.80	681.60
TASMANIA									
<b>2001</b>									
May	787.60	820.10	684.90	692.30	707.20	466.20	754.00	780.20	575.90
August	796.90	830.70	699.40	704.70	720.20	469.50	764.70	792.10	584.50
November	809.30	845.30	707.00	710.00	726.30	462.10	773.90	803.00	582.10
<b>2002</b>									
February	822.40	859.90	712.20	716.80	732.90	456.20	784.60	814.60	581.00
May	833.90	872.70	722.60	729.30	745.30	458.30	797.70	828.60	588.80
August	844.10	885.00	738.60	745.40	761.30	466.30	812.10	844.60	603.50
NORTHERN TERRITORY									
<b>2001</b>									
May	873.40	918.20	776.60	747.50	763.30	580.70	820.90	853.30	681.40
August	881.60	923.50	781.80	744.20	759.00	585.10	823.20	853.50	685.00
November	890.00	932.60	781.20	744.20	758.20	583.10	827.10	857.70	682.80
<b>2002</b>									
February	897.90	944.50	780.50	754.40	768.00	577.80	835.40	867.90	678.60
May	904.30	955.30	784.70	770.20	784.10	575.60	845.40	879.80	678.20
August	908.50	963.60	793.90	786.80	801.40	576.20	854.40	890.80	681.50
AUSTRALIAN CAPITAL TERRITORY									
<b>2001</b>									
May	1 015.70	1 034.30	912.20	860.00	866.30	655.90	942.80	956.10	771.40
August	1 011.40	1 033.20	887.20	863.00	869.50	639.90	945.70	960.80	755.70
November	1 007.90	1 032.00	856.70	863.70	871.10	629.70	945.60	962.10	738.70
<b>2002</b>									
February	1 011.80	1 038.40	852.90	870.40	878.10	639.50	949.70	968.00	742.20
May	1 024.20	1 053.80	875.20	885.90	893.60	661.80	962.80	983.00	764.70
August	1 042.40	1 076.30	915.40	907.30	914.90	690.50	983.00	1 005.50	800.00

AVERAGE WEEKLY EARNINGS, States & territories: **Seasonally adjusted**

Reference period	MALES.....			FEMALES.....			PERSONS.....		
	Full-time adult ordinary time earnings	Full-time adult total earnings	All males total earnings	Full-time adult ordinary time earnings	Full-time adult total earnings	All females total earnings	Full-time adult ordinary time earnings	Full-time adult total earnings	All employees total earnings
<b>NEW SOUTH WALES</b>									
<b>2001</b>									
May	934.50	988.80	839.30	766.60	781.40	556.10	873.30	913.60	704.70
August	955.20	1 004.10	859.40	782.90	794.40	565.70	891.10	926.00	719.30
November	964.60	1 011.70	868.00	791.30	803.30	569.20	900.90	935.50	725.60
<b>2002</b>									
February	961.10	1 015.40	863.20	799.90	814.10	574.10	900.80	939.40	724.50
May	974.80	1 026.50	866.20	803.10	816.00	568.30	911.60	949.40	720.90
August	974.50	1 033.60	872.60	814.90	828.10	568.80	915.30	957.20	724.00
<b>VICTORIA</b>									
<b>2001</b>									
May	837.90	882.50	762.40	734.90	749.30	519.60	800.20	835.50	644.70
August	855.00	901.10	775.70	749.10	763.70	526.10	816.50	851.90	655.70
November	865.50	909.50	782.40	758.60	771.90	529.80	829.10	862.60	663.70
<b>2002</b>									
February	898.60	959.10	821.30	779.70	793.40	530.30	860.10	902.30	679.80
May	917.10	967.60	837.10	796.50	808.80	540.80	875.00	914.40	694.30
August	939.30	988.00	857.70	798.80	811.00	560.20	889.20	925.50	715.40
<b>QUEENSLAND</b>									
<b>2001</b>									
May	808.40	857.20	739.00	705.50	716.90	509.60	770.80	808.30	632.70
August	818.00	869.90	746.20	710.40	722.20	514.40	778.60	816.40	634.70
November	836.50	884.10	772.90	709.90	720.30	517.90	792.90	825.60	648.90
<b>2002</b>									
February	843.40	894.10	772.80	726.80	739.00	524.80	800.40	836.20	652.50
May	847.20	895.80	760.70	725.30	735.20	521.80	800.40	836.60	644.10
August	858.00	916.50	769.20	746.30	757.70	506.70	817.90	860.00	639.60
<b>SOUTH AUSTRALIA</b>									
<b>2001</b>									
May	827.60	877.50	762.70	702.00	717.30	497.00	783.40	820.70	631.40
August	831.40	878.70	774.10	716.70	729.10	511.80	791.30	826.80	646.20
November	826.80	879.40	768.60	730.00	742.20	506.20	794.50	833.70	640.40
<b>2002</b>									
February	830.50	900.80	769.70	738.20	752.90	494.90	800.90	852.90	635.80
May	832.00	901.90	787.30	739.60	753.30	508.10	802.00	853.40	652.60
August	828.90	880.30	768.60	759.30	772.20	541.70	805.20	843.90	663.60



Reference period	MALES.....			FEMALES.....			PERSONS.....		
	Full-time adult ordinary time earnings	Full-time adult total earnings	All males total earnings	Full-time adult ordinary time earnings	Full-time adult total earnings	All females total earnings	Full-time adult ordinary time earnings	Full-time adult total earnings	All employees total earnings
WESTERN AUSTRALIA									
<b>2001</b>									
May	902.50	951.00	803.40	695.40	705.00	465.40	832.20	866.90	637.90
August	908.50	955.40	799.90	723.90	735.90	474.60	843.30	878.40	640.70
November	920.80	968.20	816.90	734.30	746.00	489.20	854.50	890.10	654.20
<b>2002</b>									
February	931.40	984.80	834.20	730.20	739.00	504.90	858.90	895.40	674.80
May	931.20	991.40	833.60	740.00	748.60	497.10	864.90	906.40	667.40
August	949.90	1 004.00	828.10	749.00	761.70	505.00	884.60	925.60	685.20
TASMANIA									
<b>2001</b>									
May	789.80	818.40	681.90	693.90	708.40	465.00	757.70	780.60	576.80
August	793.00	830.50	701.50	706.30	724.40	475.80	762.50	793.20	587.90
November	809.20	843.50	715.60	711.40	726.10	462.40	774.80	802.30	586.30
<b>2002</b>									
February	828.10	866.80	707.40	714.30	730.30	450.10	786.40	817.60	574.90
May	829.10	866.70	710.40	722.60	740.00	453.70	791.80	821.30	579.10
August	845.80	887.30	754.00	754.60	769.40	475.50	817.50	850.60	617.70
NORTHERN TERRITORY									
<b>2001</b>									
May	877.80	920.90	768.00	753.30	769.60	585.70	825.90	856.60	680.10
August	877.80	918.30	790.00	741.10	755.70	585.20	819.90	849.10	689.20
November	891.20	934.80	785.20	740.80	754.60	581.40	825.90	857.20	683.40
<b>2002</b>									
February	897.80	943.50	770.50	754.90	768.90	583.40	835.80	868.50	676.80
May	906.50	958.20	784.30	768.70	781.40	564.40	846.10	879.60	672.80
August	906.60	961.90	800.90	790.10	805.80	584.10	854.50	891.80	688.10
AUSTRALIAN CAPITAL TERRITORY									
<b>2001</b>									
May	1 011.70	1 030.10	907.60	861.20	866.60	649.00	940.50	953.50	765.40
August	1 017.40	1 040.20	905.90	869.90	876.70	648.00	953.60	969.30	769.30
November	1 003.60	1 027.80	840.10	856.90	864.10	622.20	940.90	956.40	728.70
<b>2002</b>									
February	1 013.20	1 038.90	848.90	872.20	881.10	633.60	951.50	971.10	736.50
May	1 014.20	1 043.80	861.30	877.70	884.20	662.10	950.80	969.90	756.90
August	1 053.70	1 087.60	935.90	916.00	924.00	697.40	995.20	1 018.20	814.40

AVERAGE WEEKLY EARNINGS, States & territories: **Original**

Reference period	MALES.....			FEMALES.....			PERSONS.....		
	Full-time adult ordinary time earnings	Full-time adult total earnings	All males total earnings	Full-time adult ordinary time earnings	Full-time adult total earnings	All females total earnings	Full-time adult ordinary time earnings	Full-time adult total earnings	All employees total earnings
NEW SOUTH WALES									
<b>2001</b>									
May	932.70	988.40	836.50	766.20	780.90	555.40	871.10	911.60	703.50
August	957.30	1 005.00	861.60	781.30	793.70	566.60	892.00	926.60	720.30
November	965.10	1 015.20	868.10	790.80	803.70	564.80	901.50	938.10	723.10
<b>2002</b>									
February	960.10	1 011.10	863.70	802.50	814.90	578.30	901.60	938.30	727.20
May	973.10	1 026.20	863.20	802.70	815.60	567.40	909.30	947.40	719.60
August	976.70	1 034.60	875.00	813.20	827.20	569.80	916.10	957.80	725.10
VICTORIA									
<b>2001</b>									
May	836.50	883.60	761.10	733.40	747.30	519.60	799.60	834.90	644.10
August	853.80	899.10	770.50	749.10	763.60	527.40	816.80	851.30	653.60
November	864.00	912.90	786.40	762.00	777.20	526.40	829.30	866.80	663.20
<b>2002</b>									
February	903.00	956.20	823.50	777.90	790.30	532.20	860.00	899.20	682.50
May	915.40	969.10	836.10	794.60	806.30	541.00	874.40	913.80	694.10
August	938.20	985.70	851.90	799.00	811.10	561.50	889.60	924.80	713.10
QUEENSLAND									
<b>2001</b>									
May	811.00	859.90	745.70	705.10	716.90	511.40	773.80	809.80	636.20
August	812.40	866.40	747.90	711.60	723.00	518.60	775.80	814.30	639.00
November	835.80	886.20	763.50	710.60	722.40	510.00	790.80	827.30	640.80
<b>2002</b>									
February	847.20	892.90	773.20	725.30	735.90	526.20	802.20	835.00	652.40
May	850.00	898.70	767.70	724.70	735.20	523.70	803.70	838.20	647.80
August	851.80	912.60	770.90	747.90	758.60	511.00	814.90	857.90	644.00
SOUTH AUSTRALIA									
<b>2001</b>									
May	824.80	875.00	759.10	698.00	714.20	493.00	780.90	819.30	628.90
August	832.60	875.90	771.20	714.50	727.10	513.00	791.70	824.30	644.50
November	827.80	884.90	772.10	733.00	745.80	506.00	796.10	838.40	641.40
<b>2002</b>									
February	831.00	900.50	773.20	741.80	754.60	497.90	801.50	852.20	639.20
May	829.40	899.40	783.50	735.10	749.80	503.80	799.40	851.80	649.90
August	829.90	877.40	765.50	757.20	770.30	543.20	805.50	841.40	661.80

Reference period	MALES.....			FEMALES.....			PERSONS.....		
	Full-time adult ordinary time earnings	Full-time adult total earnings	All males total earnings	Full-time adult ordinary time earnings	Full-time adult total earnings	All females total earnings	Full-time adult ordinary time earnings	Full-time adult total earnings	All employees total earnings
WESTERN AUSTRALIA									
<b>2001</b>									
May	901.80	952.00	803.30	693.80	704.70	462.70	830.40	867.00	638.90
August	911.60	955.30	800.50	722.00	733.00	474.20	844.80	876.90	638.20
November	922.10	972.50	816.90	731.60	742.80	485.80	854.70	891.20	652.30
<b>2002</b>									
February	927.30	979.30	833.40	736.70	745.60	511.90	859.20	895.80	678.20
May	930.80	992.60	833.60	738.30	748.20	494.20	863.00	906.60	668.60
August	953.00	1 003.70	828.70	746.90	758.50	504.60	886.00	924.00	682.60
TASMANIA									
<b>2001</b>									
May	788.70	820.90	685.20	691.30	704.10	462.90	755.90	781.50	576.60
August	789.20	821.90	688.50	701.10	717.70	474.10	758.10	785.20	581.90
November	812.00	848.80	720.60	717.40	735.80	457.30	778.70	809.00	584.20
<b>2002</b>									
February	830.50	867.80	711.90	716.10	731.60	458.60	788.80	818.20	582.80
May	828.00	869.40	713.90	720.10	735.70	451.80	790.00	822.40	579.10
August	841.60	877.90	740.20	748.90	762.20	473.80	812.80	841.80	611.50
NORTHERN TERRITORY									
<b>2001</b>									
May	879.00	925.70	767.10	751.40	769.00	584.70	825.50	860.00	679.00
August	874.90	917.50	789.00	740.00	754.70	587.70	817.60	848.40	688.90
November	893.90	938.80	786.80	741.40	754.60	579.90	827.80	859.00	683.40
<b>2002</b>									
February	896.90	935.40	770.80	757.40	770.70	583.30	836.60	864.10	678.20
May	908.00	963.20	783.20	766.80	780.90	563.60	846.00	883.10	671.80
August	903.30	961.00	800.10	788.70	804.50	586.40	852.00	890.90	687.70
AUSTRALIAN CAPITAL TERRITORY									
<b>2001</b>									
May	1 007.00	1 025.20	903.40	857.60	864.60	638.50	938.80	952.30	758.00
August	1 021.80	1 041.90	900.90	866.80	873.80	645.50	954.70	969.10	766.10
November	1 002.40	1 030.00	840.50	861.90	869.50	625.50	941.20	960.10	729.60
<b>2002</b>									
February	1 014.90	1 040.20	857.30	874.00	880.60	642.90	951.90	968.90	745.70
May	1 009.30	1 038.70	857.60	874.00	882.20	651.30	949.00	968.90	749.80
August	1 058.30	1 089.40	930.30	912.70	920.80	694.80	996.40	1 017.70	810.80

AVERAGE WEEKLY EARNINGS, Quarterly percentage change, States & territories: **Trend**

Reference period	MALES.....			FEMALES.....			PERSONS.....		
	Full-time adult time earnings	Full-time ordinary adult total earnings	All males total earnings	Full-time adult time earnings	Full-time ordinary adult total earnings	All females total earnings	Full-time adult time earnings	Full-time ordinary adult total earnings	All employees total earnings
NEW SOUTH WALES									
<b>2002</b>									
February	0.4	0.6	0.2	0.9	0.9	0.3	0.5	0.7	0.1
May	0.4	0.7	0.2	0.9	0.9	-0.2	0.6	0.8	-0.1
August	0.5	0.8	0.3	0.9	0.9	-0.3	0.6	0.8	-0.1
VICTORIA									
<b>2002</b>									
February	2.6	2.8	2.9	2.2	2.1	1.3	2.5	2.6	2.2
May	2.6	2.5	2.9	1.8	1.7	1.8	2.3	2.2	2.4
August	2.5	2.2	2.7	1.5	1.4	2.2	2.0	1.9	2.4
QUEENSLAND									
<b>2002</b>									
February	1.2	1.1	0.6	0.9	0.9	0.3	1.0	1.0	0.4
May	0.9	1.1	-0.1	1.3	1.3	-0.6	1.0	1.2	-0.4
August	0.8	1.1	-0.4	1.5	1.4	-1.2	1.0	1.3	-0.8
SOUTH AUSTRALIA									
<b>2002</b>									
February	0.0	0.8	0.3	1.2	1.2	0.2	0.4	1.0	0.4
May	0.0	0.1	0.2	1.2	1.2	1.9	0.4	0.4	1.1
August	0.0	-0.4	0.1	1.3	1.2	3.2	0.4	0.0	1.6
WESTERN AUSTRALIA									
<b>2002</b>									
February	0.9	1.3	1.2	0.7	0.5	1.7	1.0	1.2	1.6
May	0.9	1.2	0.6	0.7	0.7	0.9	1.1	1.3	1.3
August	1.0	1.1	0.0	0.9	1.0	0.4	1.2	1.4	1.0
TASMANIA									
<b>2002</b>									
February	1.6	1.7	0.7	1.0	0.9	-1.3	1.4	1.4	-0.2
May	1.4	1.5	1.5	1.7	1.7	0.5	1.7	1.7	1.4
August	1.2	1.4	2.2	2.2	2.2	1.7	1.8	1.9	2.5
NORTHERN TERRITORY									
<b>2002</b>									
February	0.9	1.3	-0.1	1.4	1.3	-0.9	1.0	1.2	-0.6
May	0.7	1.1	0.5	2.1	2.1	-0.4	1.2	1.4	-0.1
August	0.5	0.9	1.2	2.2	2.2	0.1	1.1	1.3	0.5
AUSTRALIAN CAPITAL TERRITORY									
<b>2002</b>									
February	0.4	0.6	-0.5	0.8	0.8	1.6	0.4	0.6	0.5
May	1.2	1.5	2.6	1.8	1.8	3.5	1.4	1.6	3.0
August	1.8	2.1	4.6	2.4	2.4	4.3	2.1	2.3	4.6

Reference period	MALES.....			FEMALES.....			PERSONS.....		
	Full-time adult ordinary time earnings	Full-time adult total earnings	All males total earnings	Full-time adult ordinary time earnings	Full-time adult total earnings	All females total earnings	Full-time adult ordinary time earnings	Full-time adult total earnings	All employees total earnings
NEW SOUTH WALES									
<b>2002</b>									
February	-0.4	0.4	-0.5	1.1	1.3	0.9	0.0	0.4	-0.1
May	1.4	1.1	0.3	0.4	0.2	-1.0	1.2	1.1	-0.5
August	0.0	0.7	0.7	1.5	1.5	0.1	0.4	0.8	0.4
VICTORIA									
<b>2002</b>									
February	3.8	5.5	5.0	2.8	2.8	0.1	3.7	4.6	2.4
May	2.1	0.9	1.9	2.2	1.9	2.0	1.7	1.3	2.1
August	2.4	2.1	2.5	0.3	0.3	3.6	1.6	1.2	3.0
QUEENSLAND									
<b>2002</b>									
February	0.8	1.1	0.0	2.4	2.6	1.3	1.0	1.3	0.5
May	0.5	0.2	-1.6	-0.2	-0.5	-0.6	0.0	0.0	-1.3
August	1.3	2.3	1.1	2.9	3.1	-2.9	2.2	2.8	-0.7
SOUTH AUSTRALIA									
<b>2002</b>									
February	0.4	2.4	0.1	1.1	1.4	-2.2	0.8	2.3	-0.7
May	0.2	0.1	2.3	0.2	0.1	2.7	0.1	0.1	2.7
August	-0.4	-2.4	-2.4	2.7	2.5	6.6	0.4	-1.1	1.7
WESTERN AUSTRALIA									
<b>2002</b>									
February	1.2	1.7	2.1	-0.6	-0.9	3.2	0.5	0.6	3.2
May	0.0	0.7	-0.1	1.3	1.3	-1.5	0.7	1.2	-1.1
August	2.0	1.3	-0.7	1.2	1.8	1.6	2.3	2.1	2.7
TASMANIA									
<b>2002</b>									
February	2.3	2.8	-1.1	0.4	0.6	-2.6	1.5	1.9	-2.0
May	0.1	0.0	0.4	1.2	1.3	0.8	0.7	0.5	0.7
August	2.0	2.4	6.1	4.4	4.0	4.8	3.2	3.6	6.7
NORTHERN TERRITORY									
<b>2002</b>									
February	0.7	0.9	-1.9	1.9	1.9	0.3	1.2	1.3	-1.0
May	1.0	1.6	1.8	1.8	1.6	-3.3	1.2	1.3	-0.6
August	0.0	0.4	2.1	2.8	3.1	3.5	1.0	1.4	2.3
AUSTRALIAN CAPITAL TERRITORY									
<b>2002</b>									
February	1.0	1.1	1.0	1.8	2.0	1.8	1.1	1.5	1.1
May	0.1	0.5	1.5	0.6	0.3	4.5	-0.1	-0.1	2.8
August	3.9	4.2	8.7	4.4	4.5	5.3	4.7	5.0	7.6

Reference period	MALES.....			FEMALES.....			PERSONS.....		
	Full-time adult ordinary time earnings	Full-time adult total earnings	All males total earnings	Full-time adult ordinary time earnings	Full-time adult total earnings	All females total earnings	Full-time adult ordinary time earnings	Full-time adult total earnings	All employees total earnings
NEW SOUTH WALES									
<b>2002</b>									
February	-0.5	-0.4	-0.5	1.5	1.4	2.4	0.0	0.0	0.6
May	1.4	1.5	-0.1	0.0	0.1	-1.9	0.9	1.0	-1.1
August	0.4	0.8	1.4	1.3	1.4	0.4	0.8	1.1	0.8
VICTORIA									
<b>2002</b>									
February	4.5	4.7	4.7	2.1	1.7	1.1	3.7	3.7	2.9
May	1.4	1.3	1.5	2.2	2.0	1.7	1.7	1.6	1.7
August	2.5	1.7	1.9	0.5	0.6	3.8	1.7	1.2	2.7
QUEENSLAND									
<b>2002</b>									
February	1.4	0.8	1.3	2.1	1.9	3.2	1.4	0.9	1.8
May	0.3	0.7	-0.7	-0.1	-0.1	-0.5	0.2	0.4	-0.7
August	0.2	1.5	0.4	3.2	3.2	-2.4	1.4	2.3	-0.6
SOUTH AUSTRALIA									
<b>2002</b>									
February	0.4	1.8	0.1	1.2	1.2	-1.6	0.7	1.6	-0.3
May	-0.2	-0.1	1.3	-0.9	-0.6	1.2	-0.3	0.0	1.7
August	0.1	-2.5	-2.3	3.0	2.7	7.8	0.8	-1.2	1.8
WESTERN AUSTRALIA									
<b>2002</b>									
February	0.6	0.7	2.0	0.7	0.4	5.4	0.5	0.5	4.0
May	0.4	1.4	0.0	0.2	0.4	-3.5	0.4	1.2	-1.4
August	2.4	1.1	-0.6	1.2	1.4	2.1	2.7	1.9	2.1
TASMANIA									
<b>2002</b>									
February	2.3	2.2	-1.2	-0.2	-0.6	0.3	1.3	1.1	-0.2
May	-0.3	0.2	0.3	0.6	0.5	-1.5	0.2	0.5	-0.6
August	1.6	1.0	3.7	4.0	3.6	4.9	2.9	2.4	5.6
NORTHERN TERRITORY									
<b>2002</b>									
February	0.3	-0.4	-2.0	2.2	2.1	0.6	1.1	0.6	-0.8
May	1.2	3.0	1.6	1.2	1.3	-3.4	1.1	2.2	-0.9
August	-0.5	-0.2	2.1	2.9	3.0	4.0	0.7	0.9	2.4
AUSTRALIAN CAPITAL TERRITORY									
<b>2002</b>									
February	1.3	1.0	2.0	1.4	1.3	2.8	1.1	0.9	2.2
May	-0.6	-0.1	0.0	0.0	0.2	1.3	-0.3	0.0	0.6
August	4.9	4.9	8.5	4.4	4.4	6.7	5.0	5.0	8.1

Reference period	MALES.....			FEMALES.....			PERSONS.....		
	Full-time adult ordinary time earnings	Full-time adult total earnings	All males total earnings	Full-time adult ordinary time earnings	Full-time adult total earnings	All females total earnings	Full-time adult ordinary time earnings	Full-time adult total earnings	All employees total earnings
NEW SOUTH WALES									
<b>August</b>									
2000	5.9	4.8	4.9	3.2	3.7	7.6	4.9	4.4	5.8
2001	6.1	5.5	5.3	6.8	5.9	3.6	6.6	5.8	4.8
2002	2.6	3.2	1.6	4.2	4.2	0.7	3.1	3.5	0.7
VICTORIA									
<b>August</b>									
2000	4.0	3.3	3.5	5.1	5.1	4.8	4.4	4.0	3.9
2001	5.4	4.9	4.4	4.4	4.1	2.8	5.1	4.7	3.9
2002	10.3	10.4	11.2	7.4	7.0	5.6	9.4	9.4	8.8
QUEENSLAND									
<b>August</b>									
2000	5.0	4.8	3.1	5.8	6.1	5.9	5.5	5.6	4.9
2001	4.3	4.4	4.7	6.6	6.3	5.1	5.0	4.9	4.4
2002	4.3	4.6	1.5	4.6	4.5	-0.5	4.2	4.5	0.1
SOUTH AUSTRALIA									
<b>August</b>									
2000	6.7	6.6	6.4	5.7	5.3	5.8	6.3	6.1	6.2
2001	4.5	3.6	5.7	7.4	5.9	5.3	5.8	4.8	5.9
2002	0.2	1.4	1.1	5.3	5.2	4.9	1.9	2.7	3.3
WESTERN AUSTRALIA									
<b>August</b>									
2000	6.0	5.0	5.8	6.8	6.5	7.0	6.5	5.6	6.7
2001	3.7	3.3	3.7	4.9	5.0	5.6	3.8	3.6	4.8
2002	3.8	4.8	3.3	3.3	3.0	5.7	4.3	5.0	5.7
TASMANIA									
<b>August</b>									
2000	5.2	5.2	2.0	4.1	4.7	0.2	4.8	5.0	1.2
2001	1.3	0.7	1.8	8.4	7.9	9.6	3.5	2.9	5.6
2002	5.9	6.5	5.6	5.8	5.7	-0.7	6.2	6.6	3.3
NORTHERN TERRITORY									
<b>August</b>									
2000	5.3	4.3	10.3	3.2	3.5	8.3	4.7	4.3	9.4
2001	2.9	2.3	3.5	2.0	1.3	3.5	2.5	1.9	3.0
2002	3.1	4.3	1.6	5.7	5.6	-1.5	3.8	4.4	-0.5
AUSTRALIAN CAPITAL TERRITORY									
<b>August</b>									
2000	9.6	8.2	11.3	5.3	5.0	11.9	7.0	6.0	10.4
2001	1.5	1.6	-1.2	3.2	2.9	-0.1	2.6	2.7	0.0
2002	3.1	4.2	3.2	5.1	5.2	7.9	3.9	4.7	5.9

# EXPLANATORY NOTES

## INTRODUCTION

**1** This publication contains estimates of average weekly earnings for August 2002 based on information obtained from a sample survey of employers.

## SCOPE AND COVERAGE

**2** All wage and salary earners who received pay for the reference period are represented in the Survey of Average Weekly Earnings (AWE), except:

- members of the Australian permanent defence forces;
- employees of enterprises primarily engaged in agriculture, forestry and fishing;
- employees in private households employing staff;
- employees of overseas embassies, consulates, etc;
- employees based outside Australia; and
- employees on workers' compensation who are not paid through the payroll.

**3** Also excluded are the following persons who are not regarded as employees for the purposes of this survey:

- casual employees who did not receive pay during the reference period;
- employees on leave without pay who did not receive pay during the reference period;
- employees on strike, or stood down, who did not receive pay during the reference period;
- directors who are not paid a salary;
- proprietors/partners of unincorporated businesses;
- self-employed persons such as subcontractors, owner/drivers, consultants; and
- persons paid solely by commission without a retainer.

**4** The sample for the AWE survey, like most ABS business surveys, is selected from the ABS Business Register which is primarily based on registrations to the Australian Taxation Office's (ATO) Pay As You Go Withholding (PAYGW) scheme (and prior to 1 June 2000 the Group Employer (GE) scheme). The population is updated quarterly to take account of:

- new businesses;
- businesses which have ceased employing;
- changes in employment levels;
- changes in industry; and
- other general business changes.

The estimates include an allowance for the time it takes newly registered businesses to get on to the survey population.

**5** Businesses which have ceased employing are identified when the ATO cancels their PAYGW registration (or previously their GE registration). In addition, from May 1999, businesses which did not remit under the GE scheme for the previous five quarters were removed from the frame. A similar process will be adopted to remove businesses which do not remit under the PAYGW scheme.

## CHANGES TO ABS BUSINESS REGISTER

**6** The introduction of The New Tax System has a number of significant implications for ABS business statistics. These are discussed in the information paper *ABS Statistics and The New Tax System* (cat. no. 1358.0). The replacement of the GE registration process by PAYGW registration resulted in a number of changes to the populations for most business surveys. These changes caused a greater than normal rotation of the businesses included in the AWE survey sample between February and May 2001.



## EXPLANATORY NOTES

### SURVEY DESIGN

**7** A sample of approximately 4,700 employer units is selected from the ABS Business Register to ensure adequate state and industry representation. The sample is updated each quarter to reflect changes in the ABS Business Register. These changes arise from the emergence of new businesses, takeovers and mergers, changes to industry classification, changes in the number of employees, and businesses which have ceased operations. Such updating of the register can contribute to changes in the estimates of average weekly earnings.

**8** The statistical unit for the survey comprises all the activities of an employer in a particular state or territory based on the Australian Business Number unit or Type of Activity Unit (see paragraphs 11 and 15 of the Explanatory Notes). Each statistical unit is classified to an industry which reflects the predominant activity of the business. The statistical units are stratified by state, sector, industry and employment size and an equal probability sample is selected from each stratum.

### STATISTICAL UNITS DEFINED ON THE ABS BUSINESS REGISTER

**9** The ABS uses an economic statistics units model on the ABS Business Register to describe the characteristics of businesses, and the structural relationships between related businesses. The units model is also used to break groups of related businesses into relatively homogeneous components that can provide data to the ABS.

**10** In mid 2002, to better use the information available as a result of The New Tax System, the ABS changed its economic statistics units model. The new units model allocates businesses to one of two sub-populations. The vast majority of businesses are in what is called the ATO Maintained Population, while the remaining businesses are in the ABS Maintained Population. Together, these two sub-populations make up the ABS Business Register population.

#### ATO Maintained Population

**11** Most businesses and organisations in Australia need to obtain an Australian Business Number (ABN), and are then included on the ATO Australian Business Register. Most of these businesses have simple structures; therefore the unit registered for an ABN will satisfy ABS statistical requirements. For these businesses, the ABS has aligned its statistical units structure with the ABN unit. The businesses with simple structures constitute the ATO Maintained Population, and the ABN unit will be used as the economic statistics unit for all economic collections.

#### ABS Maintained Population

**12** For the population of businesses where the ABN unit is not suitable for ABS statistical requirements, the ABS will maintain its own units structure through direct contact with the business. These businesses constitute the ABS Maintained Population. This population consists typically of large, complex and diverse businesses. The new statistical units model described below has been introduced to cover such businesses.

**13** Enterprise Group: This is a unit covering all the operations in Australia of one or more legal entities under common ownership and/or control. It covers all the operations in Australia of legal entities which are related in terms of the current Corporations Law (as amended by the Corporations Legislation Amendment Act 1991), including legal entities such as companies, trusts, and partnerships. Majority ownership is not required for control to be exercised.

**14** Enterprise: The enterprise is an institutional unit comprising (i) a single legal entity or business entity, or (ii) more than one legal entity or business entity within the same Enterprise Group and in the same institutional sub-sector (ie they are all classified to a single Standard Institutional Sector Classification of Australia sub-sector).

## EXPLANATORY NOTES

ABS Maintained Population **15** Type of Activity Unit (TAU): The TAU is comprised of one or more business entities, sub-entities or branches of a business entity within an Enterprise Group that can report production and employment data for similar economic activities. When a minimum set of data items are available, a TAU will be created which covers all the operations within an industry sub-division (and the TAU will be classified to the relevant sub-division of the Australian and New Zealand Standard Industrial Classification). Where a business cannot supply adequate data for each industry, a TAU will be formed which contains activity in more than one industry sub-division.

*continued*

**16** For more information on the impacts of the introduction of the new economic statistics units model, refer to Information Paper: *Improvements in ABS Economic Statistics [Arising from the New Tax System]* (cat. no. 1372.0).

### NOTES ON ESTIMATES

**17** Average weekly earnings statistics represent average gross (before tax) earnings of employees and do not relate to average award rates nor to the earnings of the 'average person'. Estimates of average weekly earnings are derived by dividing estimates of weekly total earnings by estimates of number of employees. Changes in the averages may be affected not only by changes in the level of earnings of employees but also by changes in the overall composition of the wage and salary earner segment of the labour force.

**18** There are several aspects which can contribute to compositional changes, including variations over time in the proportions of full-time, part-time, casual and junior employees; variations in the occupational distribution within and across industries; variations in the distribution of employment between industries; and variations in the proportion of male and female employees. Such effects may apply differently within different states and territories, and over time.

### ROUNDING

**19** Estimates of average weekly earnings are rounded to the nearest 10 cents.

**20** Percentage changes are calculated on the actual values and may differ from calculations based on rounded estimates.

### HISTORICAL SERIES

**21** The AWE series was introduced in August 1981 when it replaced the average weekly earnings series based principally on information from payroll tax returns. Revised estimates of average weekly earnings for the period August 1981 to November 1983 were included in *Average Weekly Earnings, States and Australia, March Quarter 1984* (cat. no. 6302.0) published on 12 July 1984. Users who need a measure of the movement in earnings for a period which spans both the payroll tax based and employer survey series should refer to Table 3 in that publication which presents both series linked to a common index base (August 1981 = 100.0).

### SEASONAL ADJUSTMENT

**22** Seasonal adjustment is a means of removing the estimated effects of normal seasonal variation from the series so that the effects of other influences can be more clearly recognised. Seasonal adjustment does not aim to remove the irregular or non-seasonal influences which may be present in any particular series. Influences that are volatile or unsystematic can still make it difficult to interpret the movement of the series even after adjustment for seasonal variation. This means that quarter-to-quarter movements of seasonally adjusted estimates may not be reliable indicators of trend behaviour.

**23** The series have been seasonally adjusted from September 1983 and the historical series can be made available on request. The seasonal factors are reviewed annually to take account of each additional year's original data. The most recent review, using original estimates to November 2001, took place in time for inclusion in the February 2002 estimates.

**24** Details about the method of seasonal adjustment of these series are available on request.

## EXPLANATORY NOTES

### TREND ESTIMATES

**25** The ABS considers that trend estimates provide a more reliable guide to the underlying direction of the data, and are more suitable than either the seasonally adjusted or original estimates for most business decisions and policy advice.

**26** The trend estimates in this publication, obtained by dampening out the irregular component from the seasonally adjusted series, are calculated using a centred 7-term Henderson moving average of the seasonally adjusted series. Estimates for the three most recent quarters cannot be calculated using this centred average method; instead an asymmetric average is used. This can lead to revisions in the trend estimates for the last three quarters when data become available for later quarters. Revisions of trend estimates will also occur with revisions to the original data and re-estimation of seasonal adjustment factors.

**27** If a series is highly volatile then the trend estimates will be subject to greater revision for the latest few quarters as new data become available. However, it is important to note that this does not make the trend series inferior to the seasonally adjusted or original series.

**28** For more information, see *A Guide to Interpreting Time Series – Monitoring ‘Trends’: an Overview* (cat. no. 1348.0) or contact the Assistant Director, Time Series Analysis on Canberra 02 6252 6345 or at <timeseries@abs.gov.au>.

**29** Three feature articles which have appeared in the ABS monthly publication *Australian Economic Indicators* (cat. no. 1350.0) may also be of interest:

- Picking Turning Points in the Economy (April 1991);
- Smarter Data Use (March 1992); and
- Direct Movement Estimator for the Survey of Average Weekly Earnings (August 1998).

### FURTHER INFORMATION

**30** Background information about the average weekly earnings series is provided in *Information Paper: New Statistical Series - Employment, Average Weekly Earnings, Job Vacancies and Overtime, Australia* (cat. no. 6256.0) published 21 June 1984. Copies are available on request.

### RELATED PUBLICATIONS

**31** The following publications contain related information and are available from ABS Bookshops:

- *Average Weekly Earnings, Australia 1941–1990* cat. no. 6350.0
- *Employee Earnings and Hours, Australia* cat. no. 6306.0—issued biennially
- *Wage Cost Index, Australia* cat. no. 6345.0—issued quarterly
- *Information Paper: New Statistical Series - Employment, Average Weekly Earnings, Job Vacancies and Overtime, Australia* cat. no. 6256.0
- *Occasional Paper No 1986/1: Statistics on Wages, Earnings, Income and Labour Costs – A Guide to Their Concepts, Measurement and Usage*
- *Labour Statistics: Concepts, Sources and Methods 2001* cat. no. 6102.0
- *Wage and Salary Earners, Public Sector, Australia* cat. no. 6248.0—issued quarterly
- *Labour Force, Australia* cat. no. 6203.0—issued monthly
- *Labour Force Projections, Australia 1999–2016* cat. no. 6260.0
- *Employee Earnings, Benefits and Trade Union Membership, Australia* cat. no. 6310.0—issued annually.

## EXPLANATORY NOTES

RELATED PUBLICATIONS *continued* **31** Current publications and other products released by the ABS are listed in the *Catalogue of Publications and Products* (cat. no. 1101.0). The Catalogue is available from any ABS office or the ABS web site <<http://www.abs.gov.au>>. The ABS also issues a daily Release Advice on the web site which details products to be released in the week ahead.

ABS DATA AVAILABLE ON REQUEST **32** As well as the statistics included in this and related publications, the ABS may have other relevant data available on request. Details of additional data available are shown in Special Data Service on page 33 of this publication.

SYMBOLS AND OTHER USAGES	ABS	Australian Bureau of Statistics
	ANZSIC	Australian and New Zealand Standard Industrial Classification
	ATO	Australian Taxation Office
	AWE	Average Weekly Earnings
	GE	Group Employer
	PAYGW	Pay As You Go Withholding
	TAU	Type of Activity Unit

## TECHNICAL NOTES

### RELIABILITY OF ESTIMATES

**1** As the estimates in this publication are based on information relating to a sample of employers, they are subject to sampling variability. That is, they may differ from the estimates that would have been produced if the information had been obtained from all employers. This difference, called *sampling error*, should not be confused with inaccuracy that may occur because of imperfections in reporting by respondents or in processing by the ABS. Such inaccuracy is referred to as *non-sampling error* and may occur in any enumeration whether it be a full count or a sample. Efforts have been made to reduce non-sampling error by careful design of questionnaires, detailed checking of returns and quality control of processing.

**2** The sampling error associated with any estimate can be estimated from the sample results. One measure of sampling error is given by the *standard error* which indicates the degree to which an estimate may vary from the value which would have been obtained from a full enumeration (the 'true value'). There are about two chances in three that a sample estimate differs from the true value by less than one standard error, and about nineteen chances in twenty that the difference will be less than two standard errors.

**3** An example of the use of a standard error is as follows. If the estimated average earnings was \$500.00 with a standard error of \$4.00, then there would be about two chances in three that a full enumeration would have given an estimate in the range \$496.00 to \$504.00 and about nineteen chances in twenty that it would be in the range \$492.00 to \$508.00.

**4** An example of the use of a standard error for a quarterly change estimate is as follows. If the estimate of quarterly change between two quarters was \$1.50 and the standard error on this estimate was \$1.00, then there would be about two chances in three that a full enumeration would have given a quarterly change estimate in the range +\$0.50 to +\$2.50 and about nineteen chances in twenty that it would be in the range -\$0.50 to +\$3.50.

**5** Quarterly movements in estimates of average weekly earnings are considered to be statistically significant where they exceed two standard errors.

**6** Another measure of the sampling error is the *relative standard error*, which is obtained by expressing the standard error as a percentage of the estimate.



AVERAGE WEEKLY EARNINGS, Standard errors, States & territories

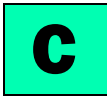
States and territories	MALES.....			FEMALES.....			PERSONS.....		
	<i>Full-time adult ordinary time earnings</i>	<i>Full-time adult total earnings</i>	<i>All males total earnings</i>	<i>Full-time adult ordinary time earnings</i>	<i>Full-time adult total earnings</i>	<i>All females total earnings</i>	<i>Full-time adult ordinary time earnings</i>	<i>Full-time adult total earnings</i>	<i>All employees total earnings</i>
LEVEL (\$)									
New South Wales	16.10	16.70	16.80	9.20	9.50	9.90	12.00	12.60	12.40
Victoria	16.60	16.40	16.80	11.80	11.70	13.70	12.70	12.80	14.50
Queensland	13.10	12.60	16.40	11.90	12.30	11.50	9.70	9.70	11.20
South Australia	17.80	17.20	17.40	10.10	10.50	13.40	12.60	12.30	13.80
Western Australia	25.00	23.20	31.10	13.90	13.80	15.10	19.90	19.20	23.90
Tasmania	16.80	17.10	29.60	12.30	13.60	16.90	12.60	13.00	22.40
Northern Territory	17.80	18.90	19.10	15.70	16.10	15.40	13.50	14.10	13.50
Australian Capital Territory	29.30	34.30	46.80	19.20	19.20	25.40	22.40	25.40	34.60
<b>Australia</b>	<b>8.00</b>	<b>8.00</b>	<b>8.60</b>	<b>5.20</b>	<b>5.20</b>	<b>5.60</b>	<b>6.00</b>	<b>6.10</b>	<b>6.50</b>

QUARTERLY MOVEMENT (\$)									
New South Wales	18.50	19.20	21.50	10.30	10.30	12.80	13.70	14.10	15.80
Victoria	18.40	18.10	18.10	12.60	12.70	16.20	13.80	13.60	15.90
Queensland	18.20	18.40	19.60	13.60	14.20	12.60	13.30	13.90	13.40
South Australia	20.20	27.30	31.50	9.20	9.50	16.80	14.40	21.20	24.60
Western Australia	19.30	21.40	34.00	18.10	18.00	19.20	13.10	14.40	26.00
Tasmania	21.30	21.40	31.20	13.30	13.60	22.40	15.80	16.10	26.40
Northern Territory	23.20	25.30	28.70	17.80	18.40	27.60	17.00	18.50	24.20
Australian Capital Territory	40.30	40.20	61.20	17.80	17.10	27.80	26.60	26.80	39.40
<b>Australia</b>	<b>9.00</b>	<b>9.10</b>	<b>10.10</b>	<b>5.80</b>	<b>5.90</b>	<b>6.80</b>	<b>6.60</b>	<b>6.80</b>	<b>7.70</b>



AVERAGE WEEKLY EARNINGS, Standard errors, Sector

Sector	MALES.....			FEMALES.....			PERSONS.....		
	<i>Full-time adult ordinary time earnings</i>	<i>Full-time adult total earnings</i>	<i>All males total earnings</i>	<i>Full-time adult ordinary time earnings</i>	<i>Full-time adult total earnings</i>	<i>All females total earnings</i>	<i>Full-time adult ordinary time earnings</i>	<i>Full-time adult total earnings</i>	<i>All employees total earnings</i>
LEVEL (\$)									
Private sector	9.50	9.50	10.00	6.60	6.70	6.50	7.50	7.60	7.80
Public sector	4.90	4.70	6.00	3.10	2.90	4.20	3.60	3.50	4.60
<b>All sectors</b>	<b>8.00</b>	<b>8.00</b>	<b>8.60</b>	<b>5.20</b>	<b>5.20</b>	<b>5.60</b>	<b>6.00</b>	<b>6.10</b>	<b>6.50</b>
QUARTERLY MOVEMENT (\$)									
Private sector	10.70	11.00	11.90	7.60	7.60	7.90	8.30	8.50	9.30
Public sector	3.80	3.60	6.00	3.10	3.00	4.50	3.20	3.00	5.00
<b>All sectors</b>	<b>9.00</b>	<b>9.10</b>	<b>10.10</b>	<b>5.80</b>	<b>5.90</b>	<b>6.80</b>	<b>6.60</b>	<b>6.80</b>	<b>7.70</b>



AVERAGE WEEKLY EARNINGS, Standard errors, Industry

Industry	MALES.....			FEMALES.....			PERSONS.....		
	<i>Full-time adult ordinary time earnings</i>	<i>Full-time adult total earnings</i>	<i>All males total earnings</i>	<i>Full-time adult ordinary time earnings</i>	<i>Full-time adult total earnings</i>	<i>All females total earnings</i>	<i>Full-time adult ordinary time earnings</i>	<i>Full-time adult total earnings</i>	<i>All employees total earnings</i>
LEVEL (\$)									
Mining	68.80	64.90	61.50	43.70	41.30	55.80	62.80	61.10	56.50
Manufacturing	14.40	14.80	16.30	14.30	14.50	17.40	12.90	13.40	15.40
Electricity, gas and water supply	15.80	15.40	19.00	17.20	17.50	21.90	14.80	14.70	19.30
Construction	23.00	26.30	26.20	30.40	31.10	26.70	21.20	24.30	24.40
Wholesale trade	27.80	27.60	24.10	21.20	21.80	20.90	24.40	24.60	22.30
Retail trade	15.60	16.40	15.90	12.80	12.90	10.30	12.80	13.60	12.60
Accommodation, cafes and restaurants	17.40	19.10	28.50	13.00	13.50	19.20	14.10	15.10	21.40
Transport and storage	20.10	21.80	22.00	24.80	26.70	23.90	15.20	18.80	20.90
Communication services	13.60	14.40	23.60	6.40	6.70	20.40	9.40	9.90	15.70
Finance and insurance	33.20	33.00	35.20	15.00	14.60	21.20	24.50	24.20	28.70
Property and business services	37.80	36.90	43.10	21.80	21.90	22.30	27.90	27.60	30.10
Government administration and defence	11.90	11.20	15.30	8.70	8.10	11.80	9.40	8.70	12.80
Education	6.40	6.50	10.00	6.50	6.50	10.20	5.60	5.60	8.40
Health and community services	34.70	35.60	28.20	10.50	11.00	10.90	15.70	16.20	12.70
Cultural and recreational services	33.60	34.70	35.80	31.70	31.50	38.20	27.30	27.90	35.30
Personal and other services	24.60	27.30	27.10	18.30	19.60	22.50	17.10	19.00	23.00
<b>All industries</b>	<b>8.00</b>	<b>8.00</b>	<b>8.60</b>	<b>5.20</b>	<b>5.20</b>	<b>5.60</b>	<b>6.00</b>	<b>6.10</b>	<b>6.50</b>

QUARTERLY MOVEMENT (\$)									
Mining	56.40	62.10	59.50	45.60	44.20	44.00	54.80	61.20	55.80
Manufacturing	14.00	14.40	15.90	12.40	13.10	19.20	12.90	13.20	16.10
Electricity, gas and water supply	11.50	11.70	18.00	16.80	17.10	21.30	11.30	11.70	17.90
Construction	26.10	33.50	35.40	33.50	34.10	28.50	24.20	32.20	34.20
Wholesale trade	28.90	28.40	26.20	26.20	26.60	29.90	24.70	24.70	24.40
Retail trade	15.50	16.80	17.30	11.70	11.60	10.90	11.70	12.70	12.40
Accommodation, cafes and restaurants	30.00	31.10	33.00	16.30	16.00	24.10	21.80	22.50	24.30
Transport and storage	26.50	24.40	25.60	21.90	22.10	35.20	20.30	20.20	27.70
Communication services	13.60	14.20	27.00	6.00	6.00	26.90	9.50	9.90	20.10
Finance and insurance	37.80	37.80	39.40	14.10	13.70	22.30	24.20	24.00	29.60
Property and business services	50.70	50.10	47.10	26.40	26.60	26.20	33.20	33.10	33.00
Government administration and defence	7.10	6.70	7.20	6.90	6.60	5.70	5.90	5.30	5.80
Education	8.80	9.00	18.20	7.10	7.10	14.00	7.00	7.10	13.30
Health and community services	38.50	38.90	32.70	11.30	11.80	15.10	17.10	17.40	16.60
Cultural and recreational services	41.80	42.30	47.10	32.30	32.00	42.10	31.10	31.30	40.70
Personal and other services	29.10	32.10	37.00	23.70	24.80	20.00	21.20	23.00	25.80
<b>All industries</b>	<b>9.00</b>	<b>9.10</b>	<b>10.10</b>	<b>5.80</b>	<b>5.90</b>	<b>6.80</b>	<b>6.60</b>	<b>6.80</b>	<b>7.70</b>



## SPECIAL DATA SERVICE

### INTRODUCTION

As well as the statistics included in this publication, other data are available from the Survey of Average Weekly Earnings on request. These data can be produced for clients as customised reports. The variables are listed below.

### HOW TO PLACE AN ORDER

Firstly, determine the variables (see following) that you require estimates for. A covering letter indicating these requirements and the intended uses of the data requested should be addressed to:

Labour Employer Surveys Section  
Australian Bureau of Statistics  
GPO Box K881  
PERTH WA 6842

### CONTACT OFFICER

If you wish to discuss individual requests, especially in regard to reliability of estimates for particular cross-classifications and the charges involved, please telephone Colin Fallows on Perth 08 9360 5304.

### VARIABLES

The following variables are available from this survey.

Note: The more variables included in any one tabulation the more likely it is that confidentiality provisions associated with the data will be invoked and some data suppressed.

Type of estimate	Original Seasonally adjusted Trend
Composition of earnings	Full-time adult ordinary time earnings Full-time adult total earnings All employees total earnings
States and territories	New South Wales Victoria Queensland South Australia Western Australia Tasmania Northern Territory Australian Capital Territory
Sector	Private sector Public sector
Sex	Males Females Persons
Industry (ANZSIC classification)	ANZSIC Division (1-digit code) —as shown in table 10 ANZSIC Sub-division (2-digit code) ANZSIC Group (3-digit code) ANZSIC Class (4-digit code)

## G L O S S A R Y

<b>Adult employees</b>	Adult employees are those employees 21 years of age or over and those employees who, although under 21 years of age, are paid at the full adult rate for their occupation.
<b>Average Weekly Earnings</b>	Average Weekly Earnings statistics represent average gross (before tax) earnings of employees and do not relate to average award rates nor to the earnings of the 'average person'. Estimates of average weekly earnings are derived by dividing estimates of weekly total earnings by estimates of number of employees.
<b>Employees</b>	Employees refer to all wage and salary earners (as defined in paragraphs 2 and 3 of the Explanatory Notes) who received pay for any part of the reference period.
<b>Full-time employees</b>	Full-time employees are permanent, temporary and casual employees who normally work the agreed or award hours for a full-time employee in their occupation and received pay for any part of the reference period. If agreed or award hours do not apply, employees are regarded as full-time if they ordinarily work 35 hours or more per week.
<b>Reference period</b>	Reference period for the survey refers to the last pay period ending on or before the third Friday of the middle month of the quarter. Where a pay period is fortnightly or monthly, etc., the employer is requested to report only one week's proportion. The reference date for the current survey is 16 August 2002.
<b>Sector</b>	Public sector includes all local government authorities and government departments, agencies and authorities created by, or reporting to the Commonwealth and state parliaments. All remaining employees are classified as private sector.
<b>Weekly ordinary time earnings</b>	Weekly ordinary time earnings refers to one week's earnings of employees for the reference period attributable to award, standard or agreed hours of work. It is calculated before taxation and any other deductions (e.g. superannuation, board and lodging) have been made. Included in ordinary time earnings are award, workplace and enterprise bargaining payments, and other agreed base rates of pay, over award and overagreed payments, penalty payments, shift and other allowances; commissions and retainers; bonuses and similar payments related to the reference period; payments under incentive or piecework; payments under profit sharing schemes normally paid each pay period; payment for leave taken during the reference period; all workers' compensation payments made through the payroll; and salary payments made to directors. Excluded are overtime payments, retrospective pay, pay in advance, leave loadings, severance, termination and redundancy payments, and other payments not related to the reference period.
<b>Weekly total earnings</b>	Weekly total earnings of employees is equal to weekly ordinary time earnings plus weekly overtime earnings.



## FOR MORE INFORMATION...

- INTERNET* **www.abs.gov.au** the ABS web site is the best place to start for access to summary data from our latest publications, information about the ABS, advice about upcoming releases, our catalogue, and Australia Now—a statistical profile.
- LIBRARY* A range of ABS publications is available from public and tertiary libraries Australia-wide. Contact your nearest library to determine whether it has the ABS statistics you require, or visit our web site for a list of libraries.
- CPI INFOLINE* For current and historical Consumer Price Index data, call 1902 981 074 (call cost 77c per minute).
- DIAL-A-STATISTIC* For the latest figures for National Accounts, Balance of Payments, Labour Force, Average Weekly Earnings, Estimated Resident Population and the Consumer Price Index call 1900 986 400 (call cost 77c per minute).

## INFORMATION SERVICE

Data which have been published and can be provided within five minutes are free of charge. Our information consultants can also help you to access the full range of ABS information—ABS user-pays services can be tailored to your needs, time frame and budget. Publications may be purchased. Specialists are on hand to help you with analytical or methodological advice.

- PHONE* **1300 135 070**
- EMAIL* **client.services@abs.gov.au**
- FAX* 1300 135 211
- POST* Client Services, ABS, GPO Box 796, Sydney 2001

## WHY NOT SUBSCRIBE?

ABS subscription services provide regular, convenient and prompt deliveries of ABS publications and products as they are released. Email delivery of monthly and quarterly publications is available.

- PHONE* 1300 366 323
- EMAIL* subscriptions@abs.gov.au
- FAX* 03 9615 7848
- POST* Subscription Services, ABS, GPO Box 2796Y, Melbourne 3001



2630200008025  
ISSN 1444-903X

RRP \$21.00